

- REMAIN 1 MILE OFFSHORE
 - AVOID RESIDENTIAL OVERFLIGHTS

(NOT FOR NAVIGATIONAL PURPOSES)

MVY Frequencies

ATIS:	126.25	(508.693.7685)
ASOS:	135.75	(508.696.6988)
Boston South:	118.2 / 133.75 / 119.7	
Vineyard ATCT:	121.4	
Ground/Clearance:	124.35	
UNICOM:	122.95	
VOR:	114.5	
RW 24 ILS/LOC DME:	108.7	

Notice!

Noise Abatement Procedures

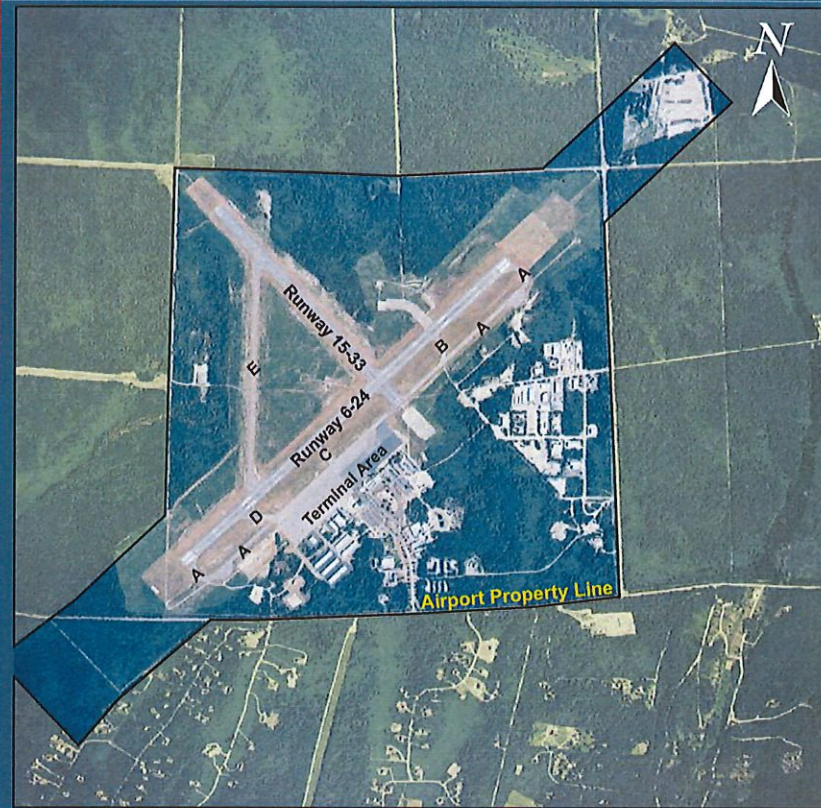
Are Not Intended To Hamper Safe Aircraft Operations and Compliance with ATC Instructions

MVY Airport Data

Field Elevation:	68' MSL
RW 6-24:	5,504' x 100'
RW 15-33:	3,328' x 75'
Pattern Altitudes	
Light Aircraft:	1,000' AGL
Heavy twins:	1,500' AGL



MVY FLY FRIENDLY - BE A GOOD NEIGHBOR
Aircraft Greater than 12,500 lbs
MVY



(Aerial Photo Courtesy of Martha's Vineyard Airport)

Airport Operations

- **AVOID RESIDENTIAL OVERFLIGHTS**
- Pattern Altitudes
 - Light Aircraft: 1,000' AGL
 - Heavy Twins: 1,500' AGL
- Maintain above 2,000' MSL for Sightseeing
- Airport Attended 24 Hours
- ATCT Hours:
 - Nov 1 - May 14 07:00 - 17:00
 - May 15 - Oct 31 06:00 - 22:00
- Services available 06:00 - 22:00 local or by prior arrangement.
- No Departures exceeding 75 dBA between 22:00 and 06:00 local time.
- Recommend utilizing landing lights when operating in the vicinity of the Island.
- **Preferred runway for noise abatement is Runway 6.**

Airport Operations: phone (508) 693-7022
 fax (508) 696-4631
 www.mvyairport.com

Additional copies of this chart are available at www.mvyairport.com

Runway 6-24

Arrivals →

- Straight-In Approaches
- Remain 1 Mile Offshore
- **WEST** Arrivals for RW24 via Vineyard Sound
- **Avoid Residential Overflights Southwest of MVY**

Departures →

- Straight-Out Departures
- Fly Runway Heading to Shoreline
- Remain 1 Mile Offshore
- **WEST** Departures from RW6 via Vineyard Sound

Noise Abatement Recommendations

MVY is in Close Proximity to Noise Sensitive Residential Neighborhoods. As such, MVY Strongly Recommends that:

1. All Operators **AVOID RESIDENTIAL OVERFLIGHTS**

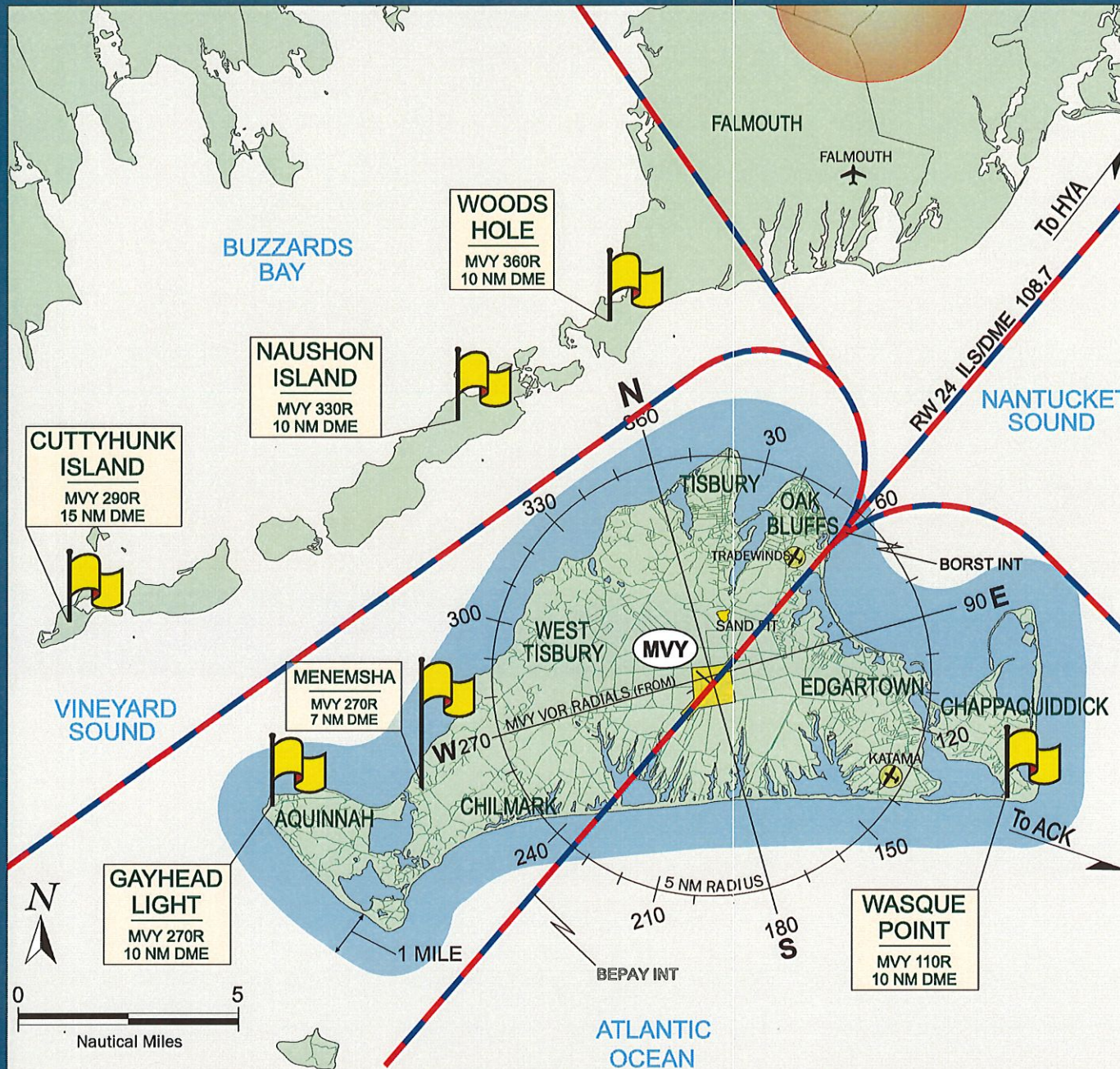
2. Corporate Pilots Use Close-In

Noise Abatement Profiles as defined by their aircraft manufacturer or by the National Business Aircraft Association (NBAA)

3. All Operators Avoid Intersection Departures.

- No Departures exceeding 75 dBA between 22:00 and 06:00 local time.

Preferred runway for noise abatement is Runway 6



- REMAIN 1 MILE OFFSHORE
- AVOID RESIDENTIAL OVERFLIGHTS

- Regional Landmarks

- Arrival / Departure Tracks

(NOT FOR NAVIGATIONAL PURPOSES)

2 MILE FINAL

AVOID RESIDENTIAL AREAS SOUTHWEST OF AIRPORT



Legend

- Martha's Vineyard

○ Martha's Vineyard

○ Oak Bluffs

Dukes

○ West Tisbury

Short Cove

Long Cove

Homer Pond Fresh Pond

Google Earth

© 2018 Google
Data SIO, NOAA, U.S. Navy, NGA, GEBCO
Image © 2019 TerraMetrics

1 mi

